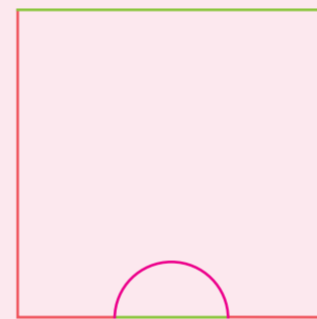
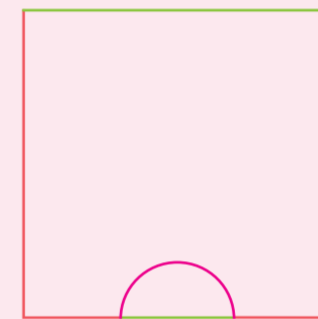
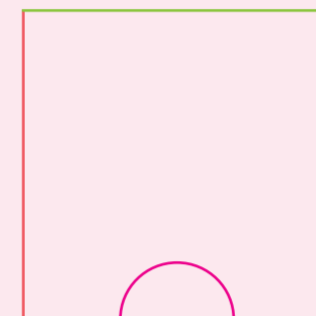
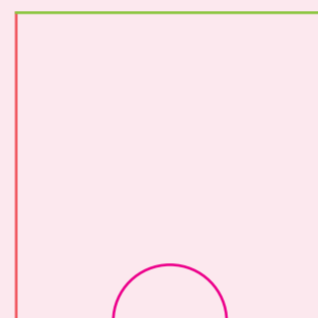


## Aftelkalender achterzijde

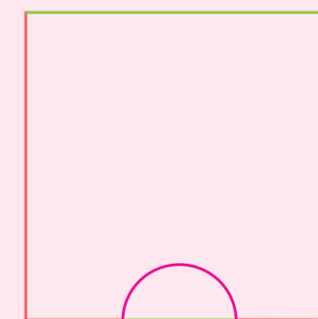
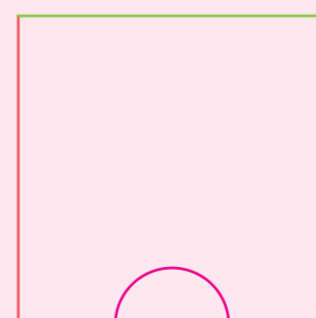
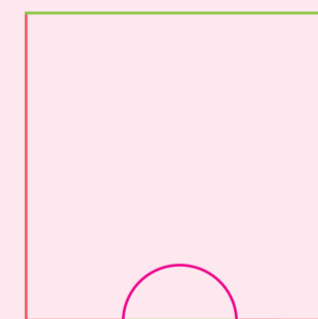
21x29 cm (25mm)

INGREDIENTEN: MELKCHOCOLADE: suiker, volle melkpoeder, cacaooter, cacaoassa, emulgator (sojalecithine) • PURE CHOCOLADE AMANDEL ZEEZOUT: cacaoassa, suiker, 10.00% amandel, cacaooter, 0.50% zeezout, emulgator (sojalecithine) • PURE CHOCOLADE: cacaoassa, suiker, cacaooter, magere cacaooeder, emulgator (sojalecithine) • MELKCHOCOLADE HAZELNOOT: suiker, volle melkpoeder, cacaooter, cacaoassa, hazelnoot, emulgator (sojalecithine) • MELKCHOCOLADE NOGA: suiker, volle melkpoeder, cacaooter, cacaoassa, 10.00% noga (rietsuiker, glucosestroop, amandel, aardappelzetmeel, honing, cacaooter, kippenei-eiwit), emulgator (sojalecithine) • MELKCHOCOLADE KARAMEL ZEEZOUT: suiker, volle melkpoeder, cacaooter, cacaoassa, 10.00% karamel (suiker, glucosestroop, boter, room), 0.50% zeezout, emulgator (sojalecithine) • DONKERE MELKCHOCOLADE PRETZEL TOFFEE: suiker, cacaoassa, volle melkpoeder, cacaooter, 7.22% pretzel stukjes (tarwebloem, zout, zonnebloemolie, tarwemoutmeel, gist, zuurteregelaar (natriumhydroxide)), 2.78% karamel (suiker, glucosestroop), zeezout, emulgator (sojalecithine) • DONKERE MELKCHOCOLADE: suiker, cacaoassa, volle melkpoeder, cacaooter, emulgator (sojalecithine) • WITTE CHOCOLADE: suiker, cacaooter, volle melkpoeder, emulgator (sojalecithine) • WITTE CHOCOLADE FRAMBOOS KNETTERSUIKER: suiker, cacaooter, volle melkpoeder, 2.70% framboos, 2.00% knettersuiker (glucosestroop, suiker, koolzuurgas), emulgator (sojalecithine) • Naast de vetgedrukte allergenen per smaak kunnen sporen van melk, gluten, ei, pinda en noten aanwezig zijn.

Bovenzijde



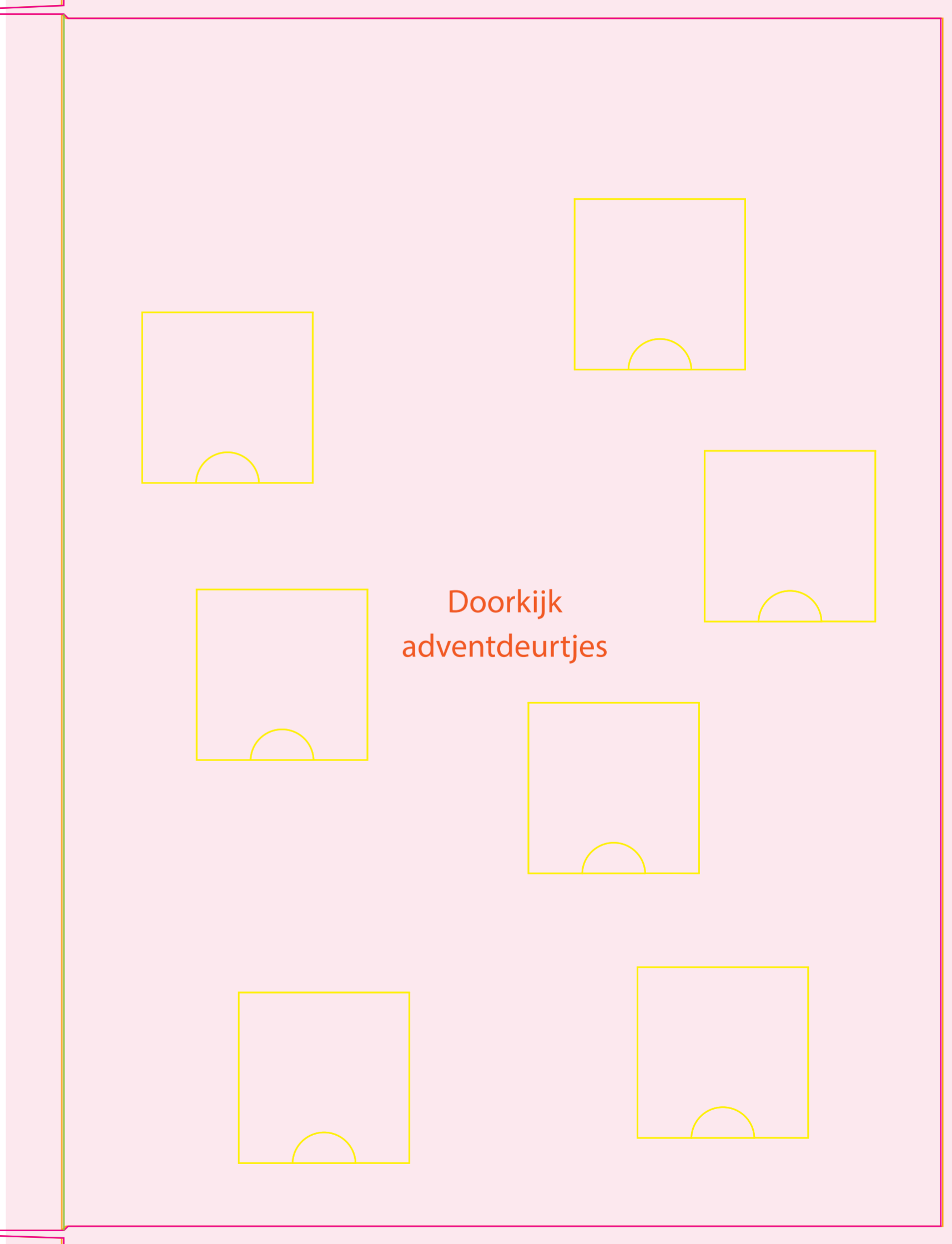
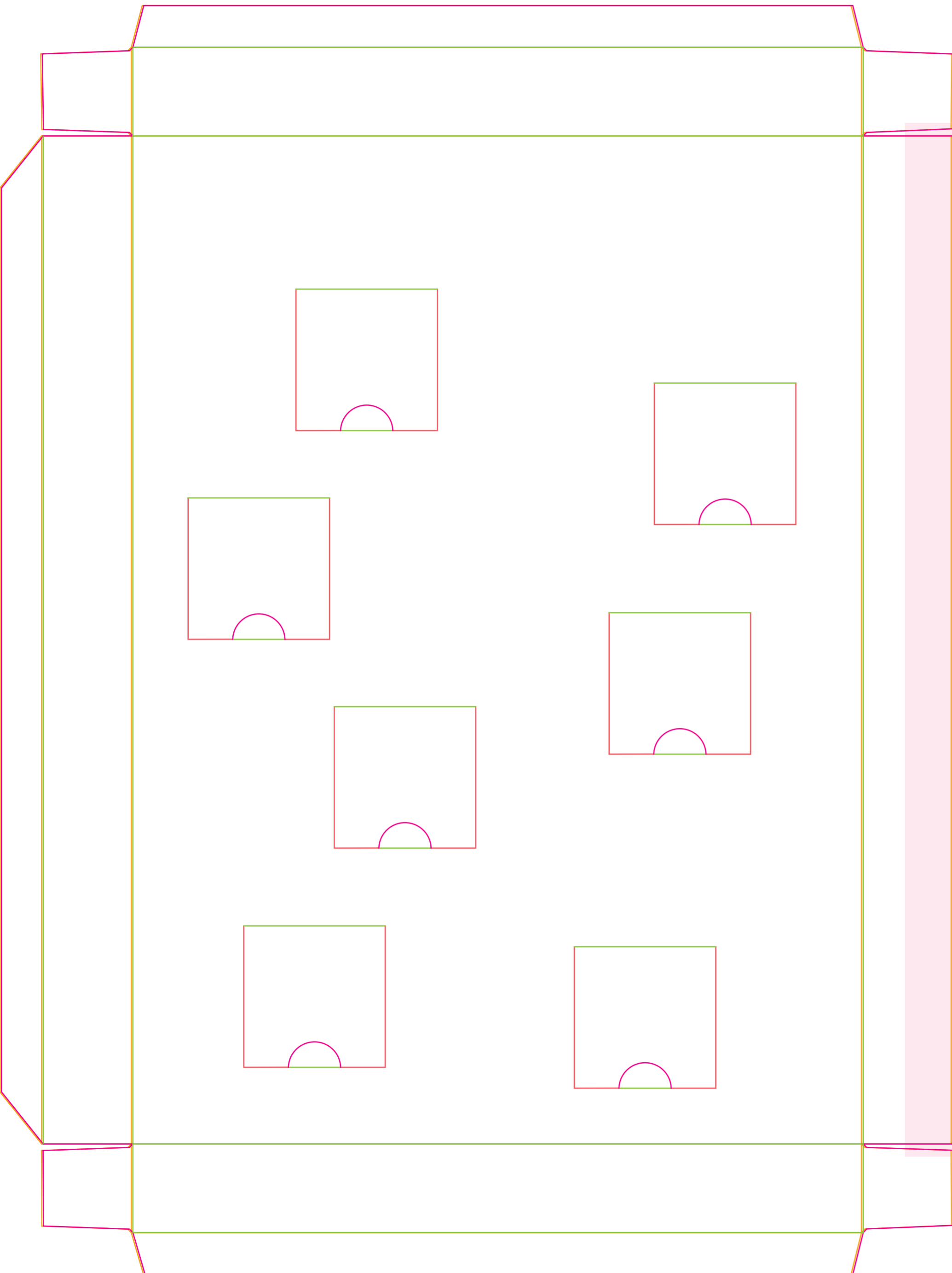
Voorzijde



Onderzijde

Zijkant A

Zijkant B



Doorkijk  
adventdeurtjes